

COMMITTEE ON EXECUTIVE MATTERS AND LEGAL AFFAIRS

City Council Chamber
Tuesday, January 12, 2021
1:00pm

COUNCIL COM. 20
EMLA

COMMITTEE ON EXECUTIVE MATTERS AND LEGAL AFFAIRS

- Welcome
- Topics
- Informational Briefing - Relating to the Safe Reopening of Outdoor Organized Sports
 - Honolulu Reopening Strategy, Tiers 1-4
 - Recap of Community Discussion
 - Outdoor Group Sports, COVID Lessons Learned
 - Wendy Anae, Athletic Director (Video Recording)
 - Elizabeth Ignacio, MD (Video Recording)
 - Randy Tanaka, Assistant Superintendent for Facilities and Operations
 - Karen Ng, Department of Health
 - Chad Owens, Former UH Football Player
 - Scott Keopuhiwa, Hawaii Youth Soccer Association President
 - Eli Matagi Thompson, Senior at Punahou High School
 - Chai Wilson, Coach and Community Leader
- Resolution 21-18

COMMITTEE ON EXECUTIVE MATTERS AND LEGAL AFFAIRS

TOPICS

Departmental Efficiencies - to be heard from January to June

- Condemnations
- City Charter Amendments
- Corporation Counsel Department
- Department of the Prosecuting Attorney
- Kapiolani Park Trust

State, Federal, and International Policy Measures – to be heard from July - December

- Sister City Relationships
- International Affairs
- National Association of Counties (NACO)
- Hawaii State Association of Counties (HSAC)
- National League of Cities (NLC)
 - Civil Service Commission
 - Ethics Commission
 - Charter Commission
 - Reapportionment Commission

The background of the slide is a photograph of a lush green field, likely a sports field, with a row of houses and a tall stadium light visible in the blurred background under a clear blue sky.

COMMITTEE ON EXECUTIVE MATTERS AND LEGAL AFFAIRS

Informational Briefing

Relating to the Safe Reopening of Outdoor
Organized Sports.

HONOLULU REOPENING STRATEGY

Tier	TIER 1	TIER 2	TIER 3	TIER 4
Case Count (7 day average)	>100	50-100	20-49	<20
Test Positivity Rate	>5%	2.5-5%	1-2.49%	<1%

Sectors and Businesses: Visit www.oneoahu.org/reopening-details for more information

Essential Businesses	Allowed	Allowed	Allowed	Allowed
Social Gatherings	5 people	5 people	10 people	25 people
Parks, Beaches, Trails, Camping	5 people	5 people	10 people	25 people
Outdoor sports (no permit)	5 people	5 people	10 people	25 people
Outdoor organized team sports (permit)	Closed	Closed	Closed	Allowed
Pools	Allowed	Allowed	Allowed	Allowed
Shooting and Archery Ranges	5 people	5 people	Allowed	Allowed
Golf Courses	Hawaii Golf Phase 2	Hawaii Golf Phase 2.5	Hawaii Golf Phase 3	Allowed
Certain Real Estate	5 people	5 people	10 people	25 people
Car Dealerships	5 people, appt only	5 people, appt only	Allowed	Allowed
Automated Service Providers	Allowed	Allowed	Allowed	Allowed
Mobile Service Providers	Allowed	Allowed	Allowed	Allowed
Retail and Service (Includes Essential Businesses)	50% Capacity	50% Capacity	Allowed	Allowed
Indoor Malls	Allowed	Allowed	Allowed	Allowed
Spiritual Services	50% capacity	50% capacity	Allowed	Allowed
Funerals	10 people	10 people	25 people	25 people
Restaurants (At the discretion of the City & County of Honolulu)	5 people, same household, 50% capacity	5 people	10 people	25 people

HONOLULU REOPENING STRATEGY - CONTINUED

Tier	TIER 1	TIER 2	TIER 3	TIER 4
Case Count (7 day average)	>100	50-100	20-49	<20
Test Positivity Rate	>5%	2.5-5%	1-2.49%	<1%

Sectors and Businesses: Visit www.oneoahu.org/reopening-details for more information

Zoos, Sea Life Attractions, Aquariums, Museums, Botanical Gardens	5 people, 50% capacity indoor areas	5 people, 50% capacity indoor areas	10 people	25 people
Other Commercial Attractions	5 people, outdoor only	5 people	10 people	25 people
Arcades	Closed	25% capacity	50% capacity	50% capacity
Bowling	5 people, 50% capacity	5 people	10 people	25 people
Tours & Skydiving	5 people	5 people	10 people	25 people
Recreational Boating (personal)	5 people	5 people	10 people	25 people
Commercial Recreational Boating	25% capacity	25% capacity	50% capacity	50% capacity
Helicopter Tours	Closed	50% capacity	Allowed	Allowed
Legal Short-Term Rentals	Closed	Allowed	Allowed	Allowed
Transportation for Non-Essential Activities	50% capacity	50% capacity	50% capacity	50% capacity
Hair & Nail Salons, Barbershops	Allowed	Allowed	Allowed	Allowed
Personal Care Services	Outdoors only	Allowed	Allowed	Allowed
Pet Services	Allowed	Allowed	Allowed	Allowed
Business Offices	Remote Encouraged	Remote Encouraged	Remote Encouraged	Remote Encouraged
Conference/Breakrooms	Spaced 6 ft apart	Spaced 6 ft apart	Spaced 6 ft apart	Spaced 6 ft apart
Movie Theaters	50% capacity	50% capacity	50% capacity	50% capacity
Group Fitness Classes	5 people outdoors	10 people outdoors 10 people indoors	10 people outdoors 10 people indoors	25 people outdoors 25 people indoors
Gym and Fitness Facilities	Outdoor	25% capacity	50% capacity	50% capacity
Bars and Night Clubs	Closed	Closed	Closed	TBD
Drive-In Services	Closed	Allowed	TBD	TBD

SIDE-BY-SIDE
COMPARISON
OF
TIERS 1 - 4

LIVE WEBINAR

ON THE SAFE REOPENING OF ORGANIZED SPORTS

- Community Discussion held on Jan. 8th
- Panelists
 - Government Leaders
 - Athletic Directors, Coaches, and Athletes
 - Medical Professionals
- Webinar Statistics



OUTDOOR GROUP SPORTS

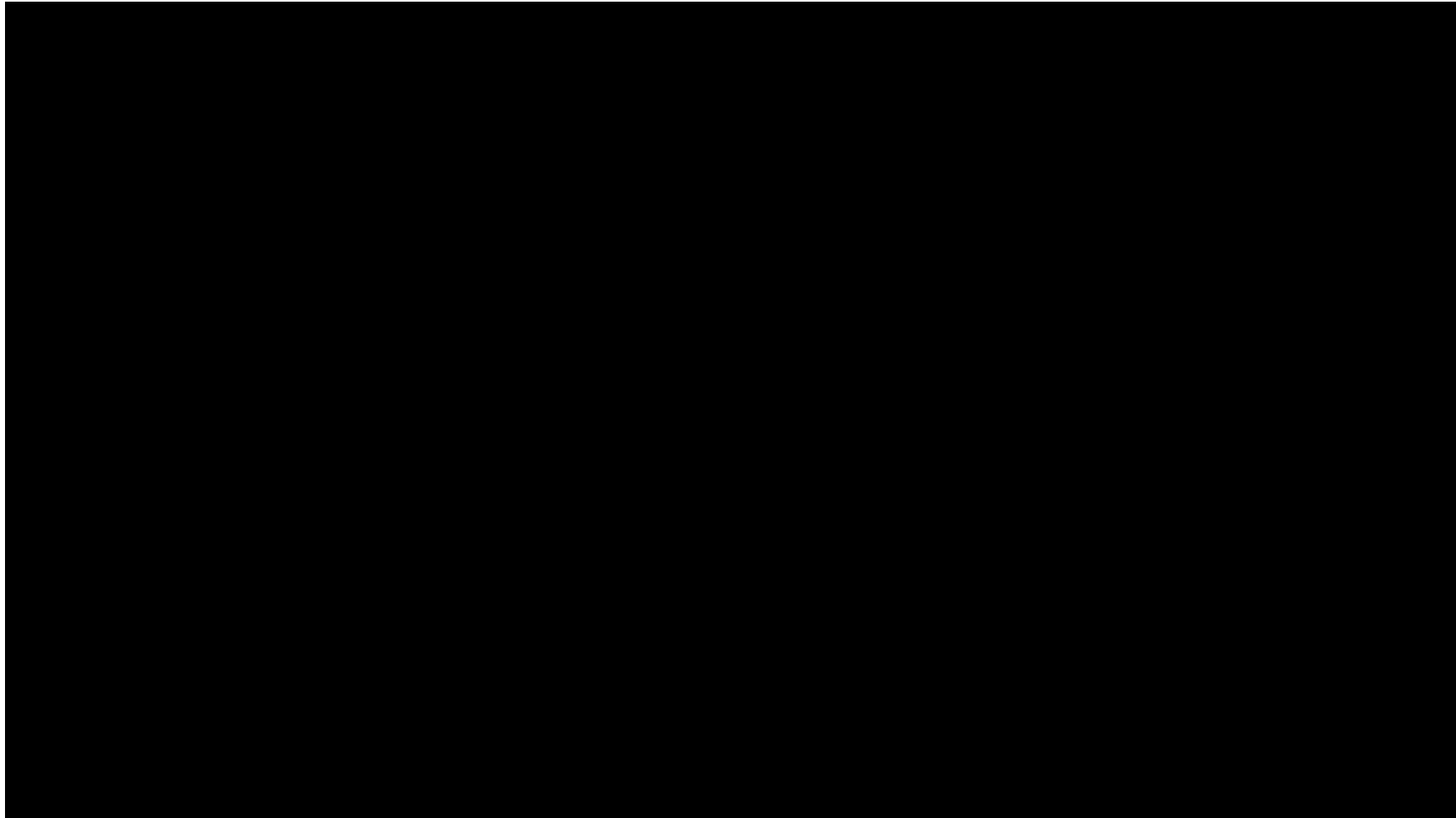
COVID LESSONS LEARNED

- Type of Sport
- Spectators
- Teams
- Key Differences



WENDY ANAE

ATHLETIC DIRECTOR AT TIMPVIEW HIGH SCHOOL IN PROVO, UTAH



ELIZABETH IGNACIO, MD

BOARD CERTIFIED ORTHOPEDIC SURGEON SPECIALIZING IN SPORTS MEDICINE

#4

Dr. Elizabeth Ignacio MD

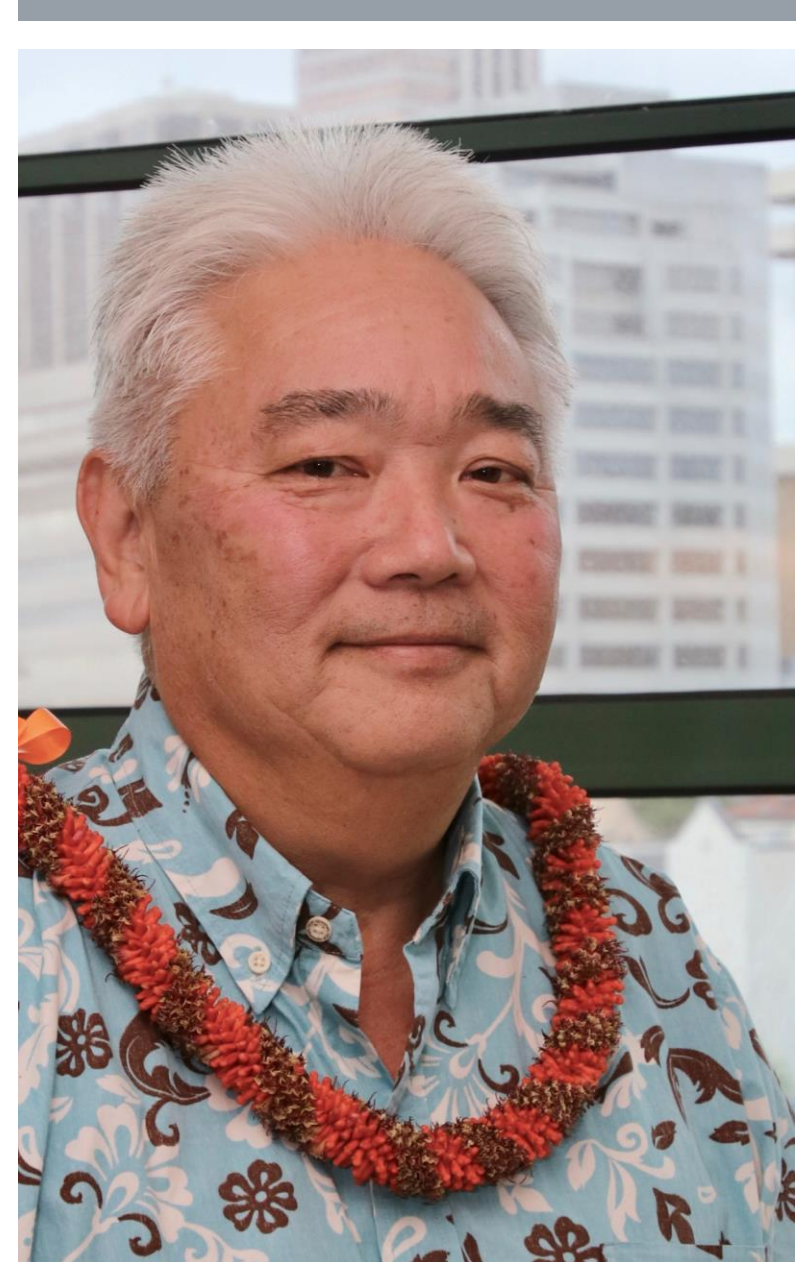
*Assistant Professor of Surgery at the John A. Burns
School of Medicine at the University of Hawai'i*

Dr. Ignacio is a board certified orthopedic surgeon specializing in sports medicine and is one of the volunteer team physicians for University of Hawaii. She has taken care of athletes from the youth level to Division 1, professional athletes, Olympian medalists.

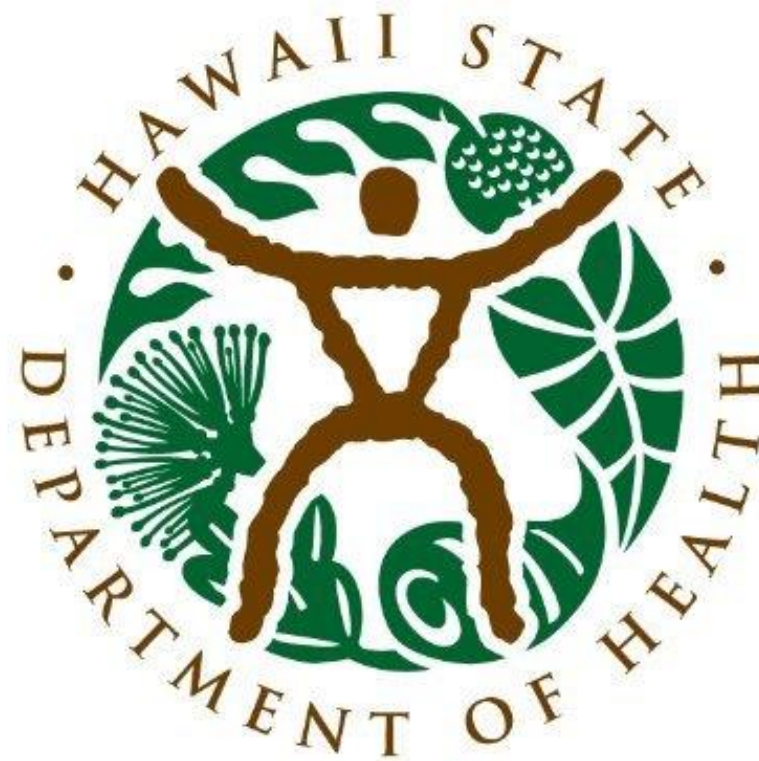


2021-01-08 17:24:17

RANDALL TANAKA
ASSISTANT SUPERINTENDENT
FOR THE HAWAI'I STATE DEPARTMENT OF EDUCATION'S
OFFICE OF FACILITIES AND OPERATIONS

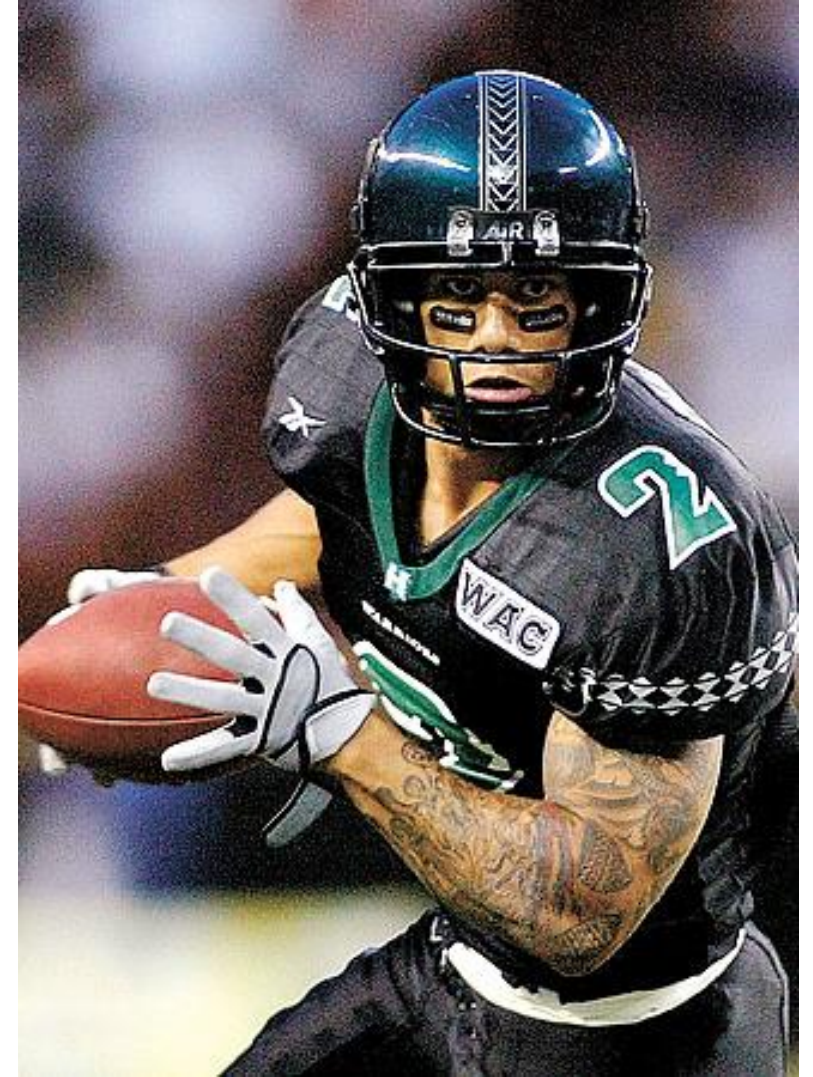


KARIN NG
PROJECT MANAGER
HAWAI'I STATE DEPARTMENT OF HEALTH
DISEASE OUTBREAK CONTROL DIVISION



CHAD OWENS

UNIVERSITY OF HAWAI'I FOOTBALL ALUMNI
FORMER NFL DRAFT PICK



SCOTT KEOPUHIWA
PRESIDENT
HAWAII YOUTH SOCCER ASSOCIATION



ELI MATAGI THOMPSON

SENIOR, PUNAHOU HIGH SCHOOL



CHAI WILSON

COACH AND COMMUNITY LEADER



COMMITTEE ON EXECUTIVE MATTERS AND LEGAL AFFAIRS

Resolution #21-18

Creation of Stakeholder Group.