

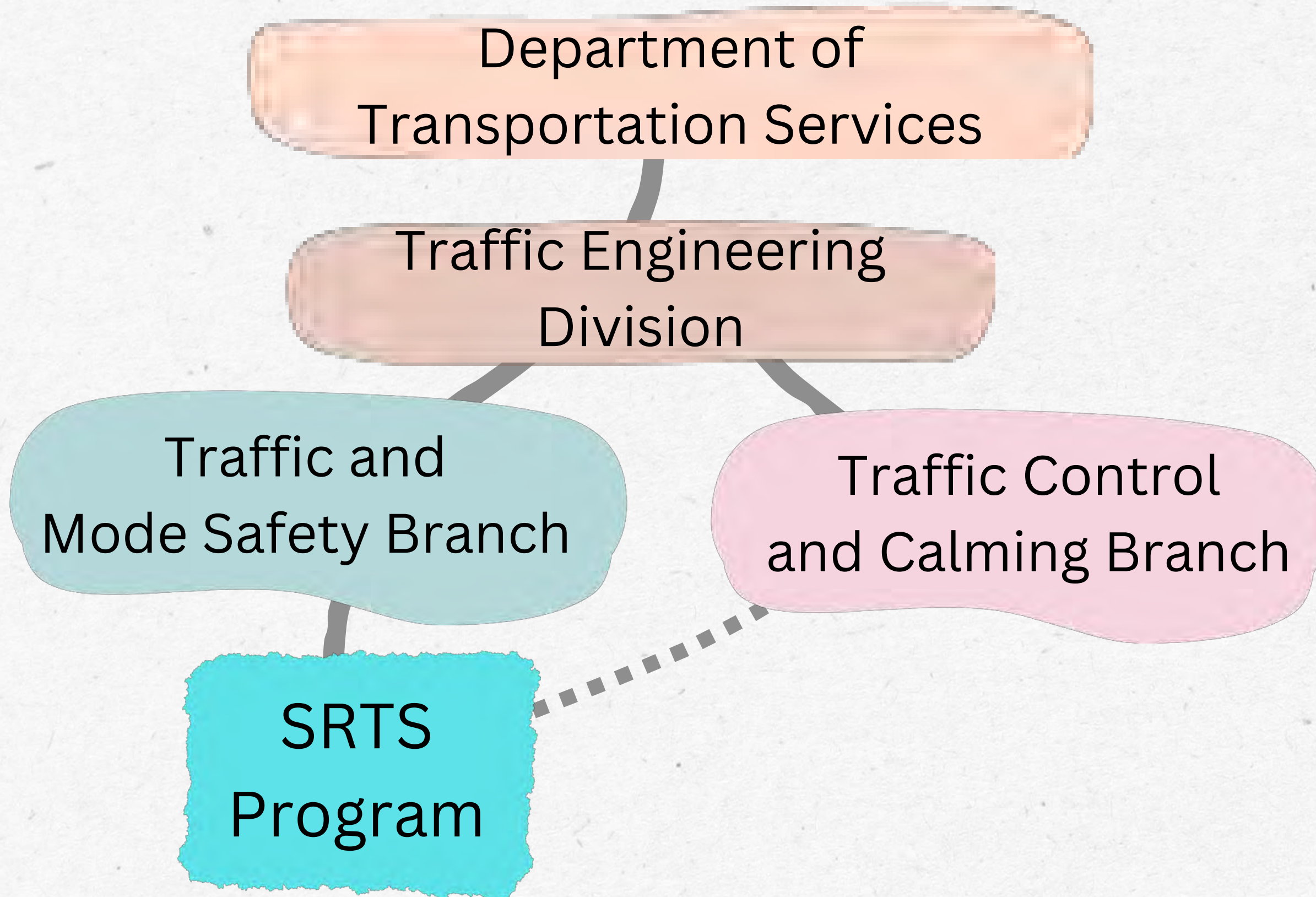


June 25, 2025

Honolulu City Council

Committee on Infrastructure, Transportation & Technology

ORGANIZATION





Fort Shafter Elementary Walk to School Day

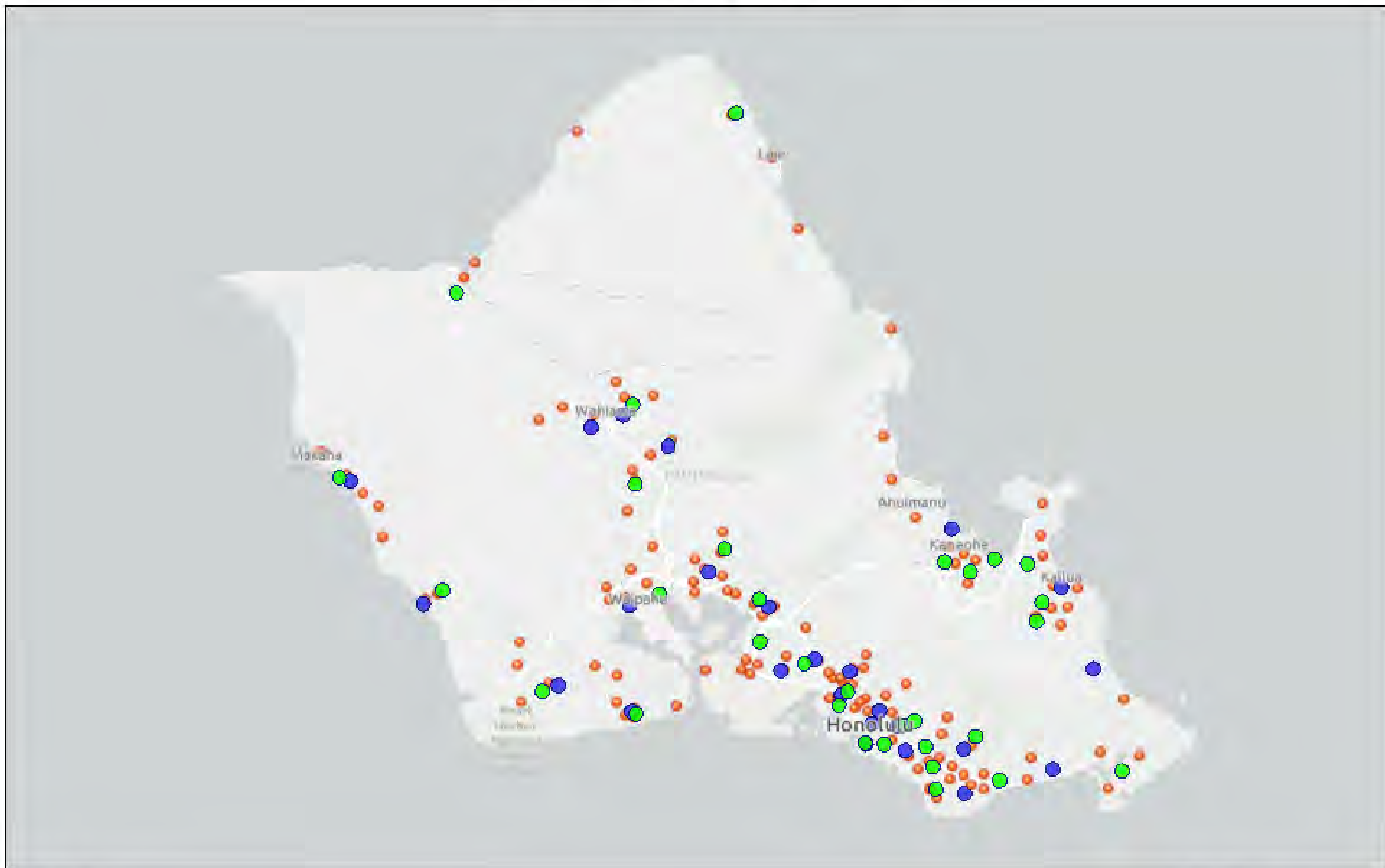
O'AHU

9 complex areas

187 K-12 schools
(including 18 charters)

225,000 students

Public Schools and Buffer



10/8/2024

- HighSchool

ElementarySchool

- MiddleSchool

1:389,468

A number line with two scales. The top scale is labeled 'mi' and has major tick marks at 0, 3, 6, and 12. The bottom scale is labeled 'km' and has major tick marks at 0, 5, 10, and 20. There are also minor tick marks between the major ones: between 0 and 3 mi (2 marks), between 3 and 6 mi (2 marks), between 6 and 12 mi (4 marks), between 0 and 5 km (1 mark), between 5 and 10 km (1 mark), and between 10 and 20 km (2 marks).

Esri, TomTom, Garmin, SafeGraph, FAO, METI/NASA, USGS, EPA, USFWS

C&C OF HONOLULU SRTS PROGRAM



- Provide resources, knowledge, and technical assistance
- Assist in identifying infrastructure needs and improvements

EMPHASIS AREAS

- Promote inclusive walking and rolling
- Increase driver safety culture
- Lower driver speeds
- Enhance crosswalks
- Enhance walkways
- Have fun!



Fern Elementary

Photo by Anni Peterson

SRTS SPECIAL FUND (291C-4)



2012

Act 317

Establishes SRTS special fund.

SRTS surcharge (\$10) and speeding fines in school zone (291C-104) deposited. Establishes state and county SRTS coordinators. HDOT to provide funds to county SRTS programs.



2014

HDOT adopts administrative rules governing SRTS special fund.



2015

C&C Honolulu begins to receive SRTS special funds from HDOT.

CC&C begins to receive funds.



2018

C&C SRTS coordinator hired. City SRTS Program begins.



2021

Act 009

Authority to appropriate SRTS special funds to counties transfers from HDOT to Legislature.

HDOT repeals SRTS special fund administrative rules.

No funds distributed to counties.



2023

Act 244

Authority to appropriate SRTS special funds returns to HDOT. Establishes HDOT SRTS Advisory Committee. \$20M appropriated to SRTS special fund.



2025

Act 112

Reserved parking space enforcement fines: 50% of EV and disable parking fines deposited into SRTS special fund.

Act 171

\$50 fine collected for street parking restrictions are deposited into the SRTS special fund.

HB 1231

\$5 SRTS vehicle registration surcharge

SRTS SPECIAL FUND ANNUAL DISTRIBUTION

From Hawaii Department Of Transportation to City & County of Honolulu

State Fiscal Year July 1 - June 30	Amount	Date of Transfer
2014	\$317,801	Mar-15
2015	\$158,901	Jun-15
2016	\$582,635	Aug-16
2017	\$291,318	Jul-17
2018	\$291,318	May-18
2019	\$287,409	May-19
2020	\$491,207	Mar-20
2021	No funds	
2022	No funds	
2023	No funds	
2024	No funds	
2025	No funds	

Total FY2014-2020: \$2,420,589
(7 year annual avg \$346,000)



OTHER FUNDING

Federal (through HDOT)

Transportation Alternatives Set-Aside (TAP 80%)

For SRTS Coordinator July 2023 – June 2025

\$93,320

SAFETEA-LU SRTS Program (2005-2009 100%)



For SRTS Coordinator July 2025 – June 2028

\$255,864

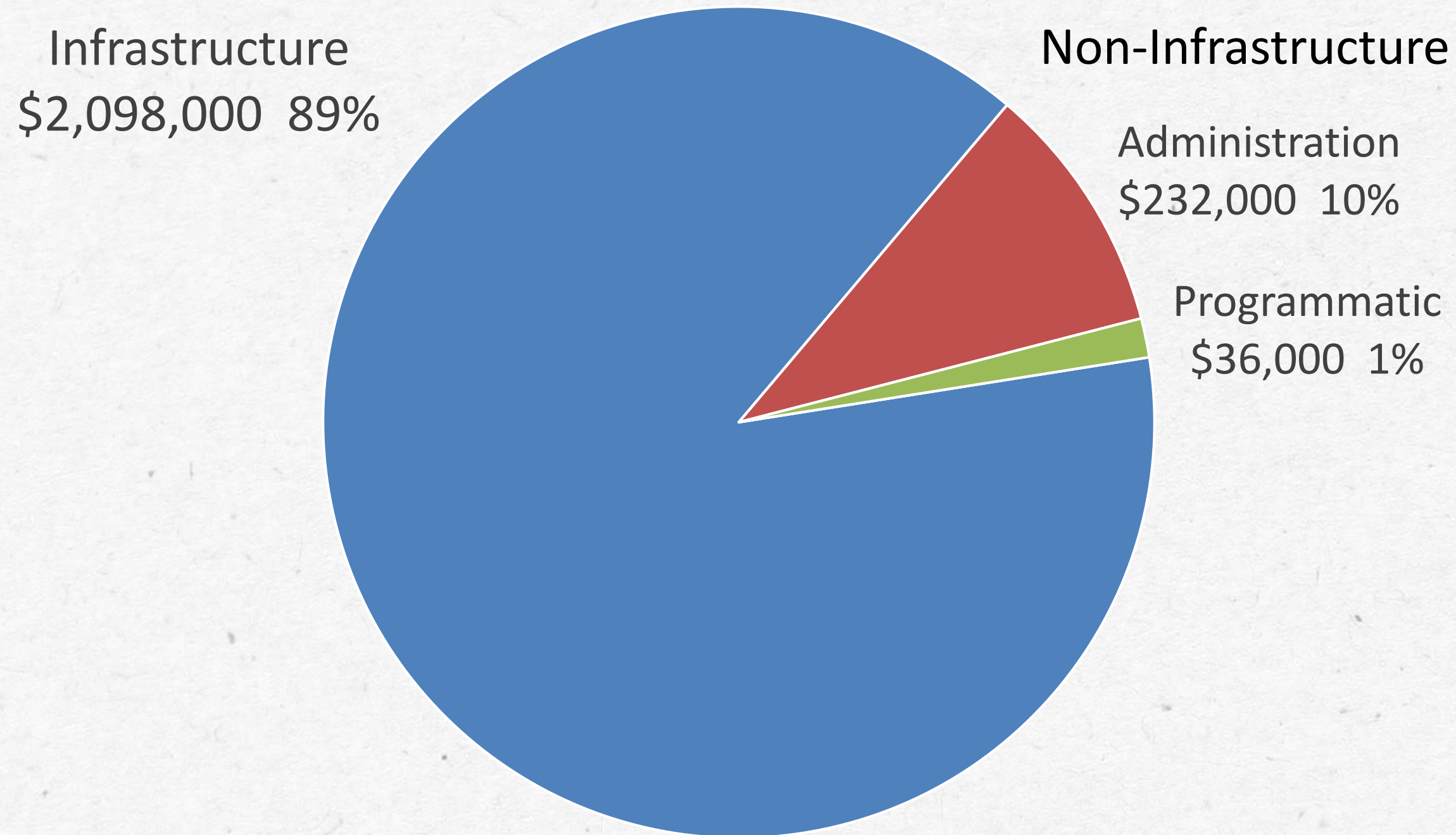
State of Hawaii Department of Health

Grant award to support City's SRTS Program May 2025 – June 2026

\$75,000



C&C HONOLULU SRTS SPECIAL FUND DISTRIBUTION



INFRASTRUCTURE PROJECTS



Fern Elementary Keiki Corridor
Kamehameha IV Rd and Kahauiki St



\$1.9M

INFRASTRUCTURE PROJECTS



6 Speed Radars \$75,000
Lincoln, Ka'elepulu, and
Makaha Elementary



Quick-Build \$9,000
Keaunui Dr
fronting Holomua Elementary



Quick-Build \$27,000
Kapolei Pkwy & Kunehi St
near Ho'okele Elementary

INFRASTRUCTURE PROJECTS



Quick Build Curb Extension
Prospect St fronting Stevenson Middle School

Project lead by Blue Zones Project - Hawaii
City contribution \$3,500

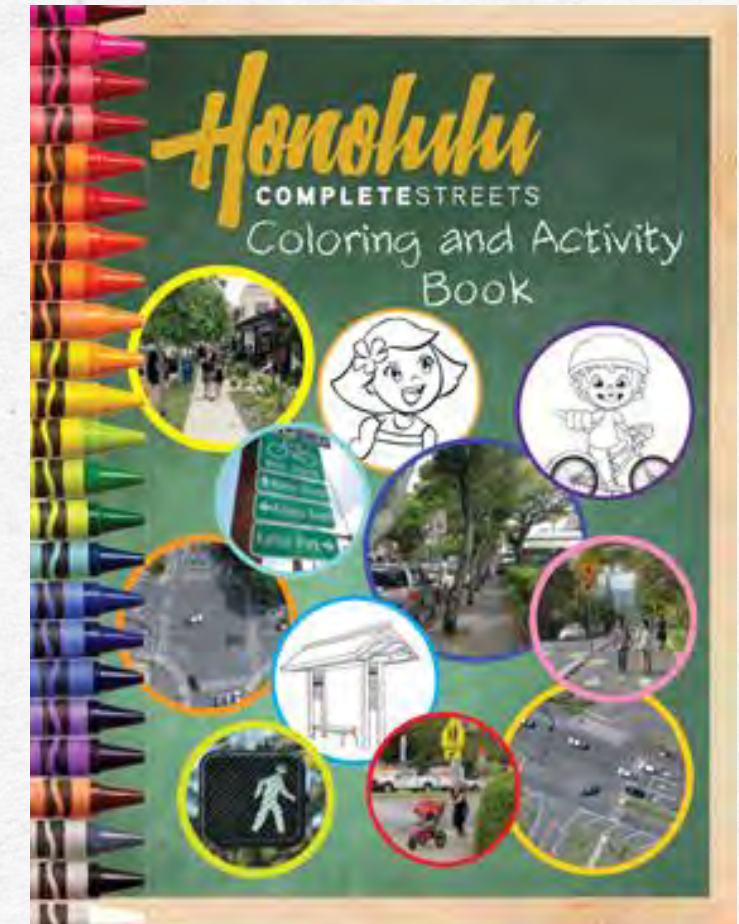
NON-INFRASTRUCTURE PROJECTS



Walk to School Day
Fort Shafter Elementary



Community Outreach
Moanalua Middle



Activity Books



Reflective vests

NON-INFRASTRUCTURE PROJECTS



Educational materials



Pedestrian education presentations
Summer Fun

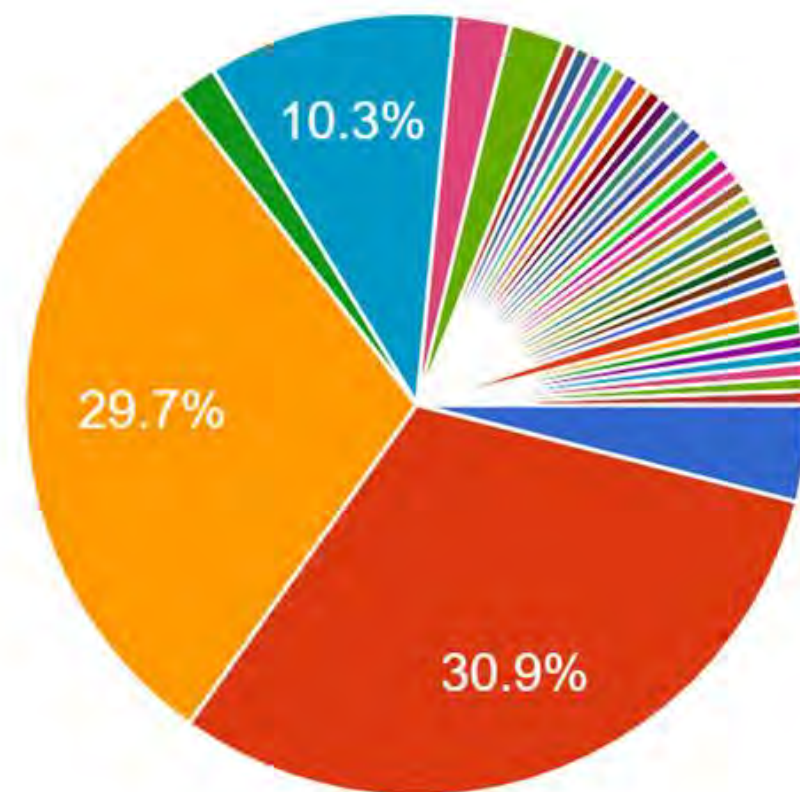


Walk Audit
Kūhiō Elementary

NON-INFRASTRUCTURE PROJECTS

What is your biggest concern with your child walking or rolling to school?

175 responses



- No concerns
- Car hitting child
- Stranger kidnapping child
- Someone bullying child
- Child getting lost
- Child taking too long to get to school
- Child being too tired from walking/rolling
- All of the above

▲ 1/5 ▼

SRTS COORDINATOR



Yamato Sasaki

yamato.sasaki@honolulu.gov

(808)768-8312

<http://www.honolulu.gov/srts>

