



DEPARTMENT OF ENVIRONMENTAL SERVICES
FY26 CAPITAL AND OPERATING BUDGET REQUEST
MARCH 13, 2025



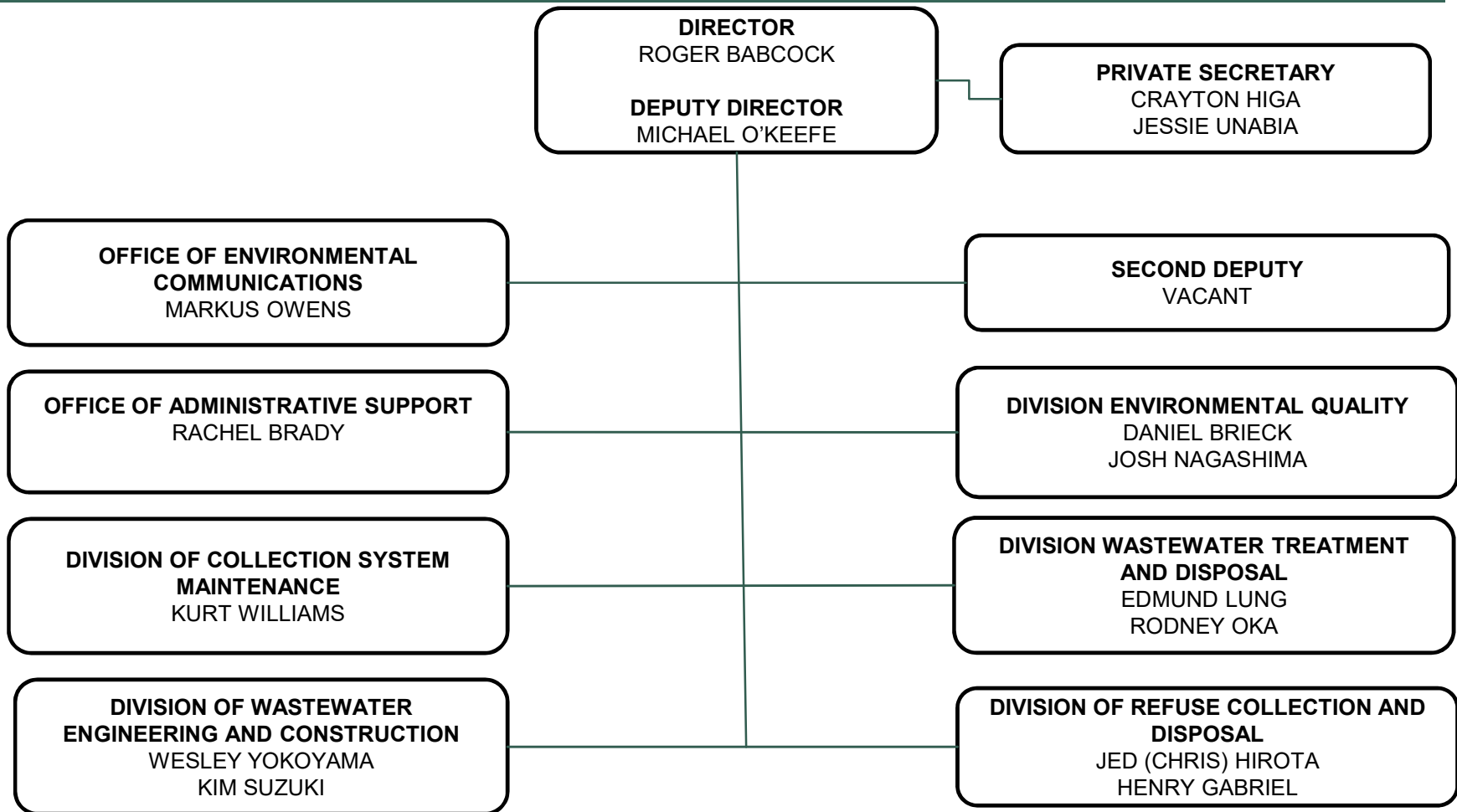


FY2026 BUDGET SUMMARY

	FY25 Operating Budget - Approved	FY26 Operating Budget - Request	\$ Change	% Change
Operations	\$ 491,694,246	\$ 537,931,757	+\$46,237,511	+9.4
Debt Service	281,498,000	249,487,000	-32,011,000	-11.4
Capital Program	445,329,800	533,688,400	+88,358,600	+19.8
TOTAL	\$1,218,522,046	\$1,321,107,157	+\$102,585,111	+8.4



ORGANIZATIONAL CHART





FY2026 CURRENT EXPENSE

DIVISION	FY25 Operating Budget - Approved	FY26 Operating Budget - Request	\$ Change	% Change
Administration	\$ 13,039,816	\$ 25,270,700	+12,230,884	+93.8
Environmental Quality	2,385,580	2,977,155	+591,575	+24.8
Collection System Maintenance	15,961,760	16,996,550	+1,034,790	+6.5
Wastewater Treatment and Disposal	68,409,072	70,514,001	+2,104,929	+3.1
Wastewater Engineering and Construction	628,500	2,736,965	+2,108,465	+335.5
Refuse	163,239,903	176,733,769	+13,493,866	+8.3
TOTAL	\$263,664,631	\$295,229,140	+ \$31,564,509	+12.0



FY2026 SALARIES

DIVISION	FY25 Operating Budget - Approved	FY26 Operating Budget - Request	\$ Change	% Change
Administration	\$ 2,916,207	\$ 3,440,002	+\$523,795	+18.0
Environmental Quality	5,920,609	6,319,271	+398,662	+6.7
Collection System Maintenance	15,709,009	16,218,452	+509,443	+3.2
Wastewater Treatment and Disposal	28,881,877	30,441,156	+1,559,279	+5.4
Wastewater Engineering and Construction	806,024	9,604,389	+8,798,365	+1,091.6
Refuse	34,304,380	34,758,530	+454,150	+1.3
TOTAL	\$88,538,106	\$100,781,800	+\$12,243,694	+13.8



FY2026 OVERTIME

DIVISION	FUND/OBJECT CODE	FY25 Operating Budget - Approved	FY26 Operating Budget - Request
Administration	170/1102	\$ 7,500	\$ 16,500
Environmental Quality	170/1102 & 1107	158,500	181,000
Collection System Maintenance	170/1102 & 1107	975,000	1,023,750
Wastewater Treatment and Disposal	170/1102 & 1107	2,576,684	3,103,777
Wastewater Engineering and Construction	170/1102 & 1107	26,000	390,500
Refuse	250/1102 & 255/1102 & 259/1102 & 250/1107 & 259/1107	8,471,800	8,866,000
	TOTAL =	\$ 12,215,484	\$ 13,581,527



VACANT POSITIONS

	Sewer	Solid Waste	ENV
Vacant Positions as of 2/1/2025	249	73	322
To be filled before 7/1/2025 (FY2025)	87	73	160
To be filled in FY2026	151	0	151
To be abolished	0	0	0
Deactivated Positions	19	42	61
Position Count	795	389	1,184



ACTIONS TO FILL VACANT POSITIONS

- Career Fairs
- Outreach Off-Island (Fellowship Program for Engineers)
- Partnering for Driver Training
- Recruit Above Minimum/Hire Above Minimum
- Recruitment/Retention Incentives
- Engineer Raises
- Recruitment Video/Branding Effort/Website Update
- Wastewater Operator Training Program
- Supervisor Training to Enable Promotion Opportunities
- Partnership with Department of Education



FY2026 DEPARTMENT OPERATING APPROPRIATION

	FY25 Operating Budget - Approved	FY26 Operating Budget - Request	\$ Change	% Change
Solid Waste	\$ 212,221,283	\$ 226,903,299	+\$14,682,016	+6.9
Sewer	164,259,514	188,675,341	+24,415,827	+14.9
TOTAL	\$ 376,480,797	\$ 415,578,640	+\$39,097,843	+10.4



SOLID WASTE OPERATING BUDGET APPROPRIATION

SOLID WASTE FUND	FY25 Operating Budget - Approved	FY26 Operating Budget - Request	% Change
ENV Dept. Operating Costs	\$212,221,283	\$226,903,299	+6.9
Non-salary Personnel Costs	25,811,000	27,356,303	+6.0
Debt Service (GO Bonds)	48,382,000	55,577,000	+14.9
Support by Other City Agencies	22,043,914	20,571,885	-6.7
SUBTOTAL	\$308,458,197	\$330,408,487	+7.1
LEGISLATIVE	12,600	12,600	0.0
TOTAL	\$308,470,797	\$330,421,087	+7.1



SEWER OPERATING BUDGET APPROPRIATION

SEWER FUND	FY25 Operating Budget - Approved	FY26 Operating Budget - Request	% Change
ENV Dept. Operating Costs	\$164,259,514	\$188,675,341	+14.9
Non-salary Personnel Costs	37,759,000	49,216,809	+30.3
Provision for Energy Costs	1,500,000	1,500,000	0.0
Debt Service (GO Bonds)	81,000	81,000	0.0
Debt Service (Revenue Bonds)	233,035,000	193,829,000	-16.8
Support by Other City Agencies	28,023,935	\$23,632,520	-15.7
SUBTOTAL	\$464,658,449	\$456,934,670	-1.7
LEGISLATIVE	63,000	63,000	0.0
TOTAL	\$464,721,449	\$456,997,670	-1.7



SOLID WASTE REVENUES

	FY25 Operating Budget - Approved	FY26 Operating Budget - Request	% Change
Tip Fees – Private Direct (H-POWER)	\$ 27,000,000	\$ 29,000,000	+7.4
Tip Fees – Other (H-POWER)	21,500,000	21,500,000	0.0
Electric Energy (H-POWER)	67,920,000	69,920,000	+2.9
Investments	4,284,000	2,170,000	-49.3
Disposal Charges (Landfill/Transfer Stations)	11,184,000	13,840,000	+23.7
Other Revenue	1,863,200	2,308,700	+23.9
TOTAL	\$133,751,200	\$138,738,700	+3.7



SEWER REVENUES

	FY25 Operating Budget – Approved	FY26 Operating Budget - Request	% Change
Sewer Service Charges	\$450,000,000	\$450,000,000	0.0
System Facility Charges	8,000,000	8,000,000	0.0
Investments	37,740,000	20,141,000	-46.6
Other Revenue	110,100	110,100	0.0
TOTAL	\$495,850,100	\$478,251,100	-3.5



FY2026 CIP FUNDING SOURCES

Solid Waste	\$106,357,000
GO Bonds	\$106,357,000
Sewer	\$427,331,400
Sewer Revenue Bonds	\$324,054,000
Sewer Cash	\$103,277,400



SOLID WASTE FY2026 CIP

PROJECTS	FY2026 TOTAL	PHASE
'Ewa Refuse Convenience Center	\$6,002,000	D, C, I
Kapa'a Transfer Station Rehabilitation	\$6,002,000	D, C, I
Ke'ehi Transfer Station – Modifications/Rehabilitation	\$13,451,000	D, C, I
O'ahu Sanitary Landfill	\$77,000,000	L, P, D
Refuse Facilities Improvements at Various Locations	\$2,301,000	P, D, C, I
Waipahu Refuse Facility & Convenience Center	\$1,601,000	P, D
TOTAL SOLID WASTE =	\$106,357,000	



WASTEWATER FY2026 CIP

IMPROVEMENT DISTRICTS - SEWERS	FY2026 TOTAL	PHASE
'Ewa Beach Sewers, Section 4, Improvement District	\$37,001,000	D, C, I
TOTAL IMPROVEMENT DISTRICTS =	\$37,001,000	



WASTEWATER FY2026 CIP

SEWAGE COLLECTION AND DISPOSAL	FY2026 TOTAL	PHASE
'Ewa Beach WWPS Force Main System Improvements	\$1,401,000	P, D
Honouliuli WWTP Effluent Treatment & Outfall Improvements	\$52,501,000	P, D, C, I
Honouliuli WWTP Headworks, PS, Energy Svgs, Solids Proc. And Misc. Imp.	\$142,250,000	D, C, I
Kailua Wastewater Treatment Plant	\$24,001,000	D, C, I
Kailua Wastewater Treatment Plant – Solids Handling System Improvements	\$37,300,000	D, C, I
Kamehameha Hwy/Whitmore Avenue Sewer Improvements, Wahiawā	\$101,000	P, D



WASTEWATER FY2026 CIP

SEWAGE COLLECTION AND DISPOSAL	FY2026 TOTAL	PHASE
Mānoa Sewer System Improvements	\$501,000	P, D
Pearl City Trunk Sewers – Rehabilitation/Replacement	\$801,000	P, D
Sand Island Wastewater Treatment Plant Secondary Treatment	\$43,901,000	P, D, C, I
Sand Island WWTP Solid System Improvements/Upgrade	\$5,500,000	I
Sewer Mainline and Lateral Projects	\$29,100,000	L, P, D, C, I
Wahiawā, Whitmore Village and Makakilo Area WWPS and Facilities Improvements	\$1,001,000	P, D



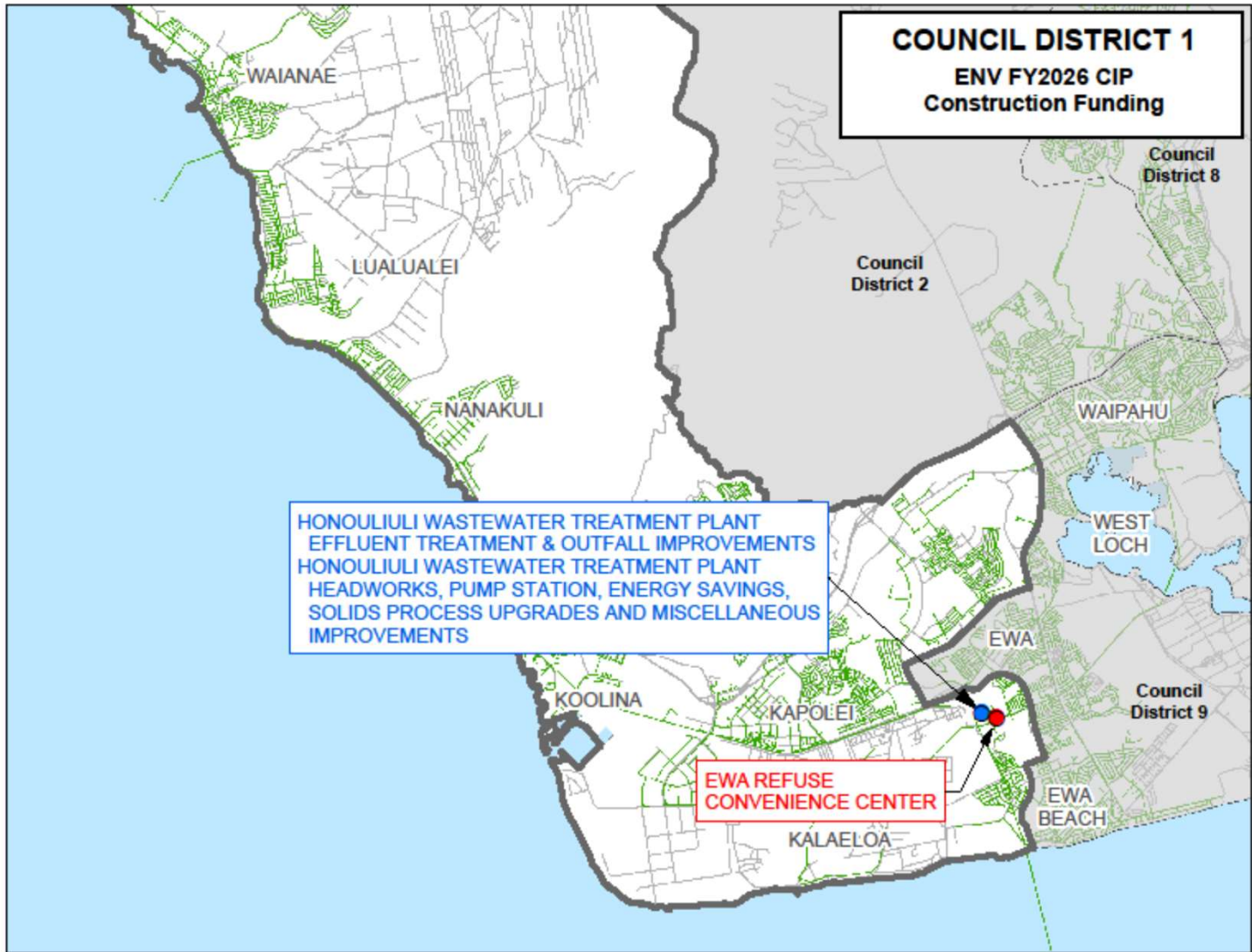
WASTEWATER FY2026 CIP

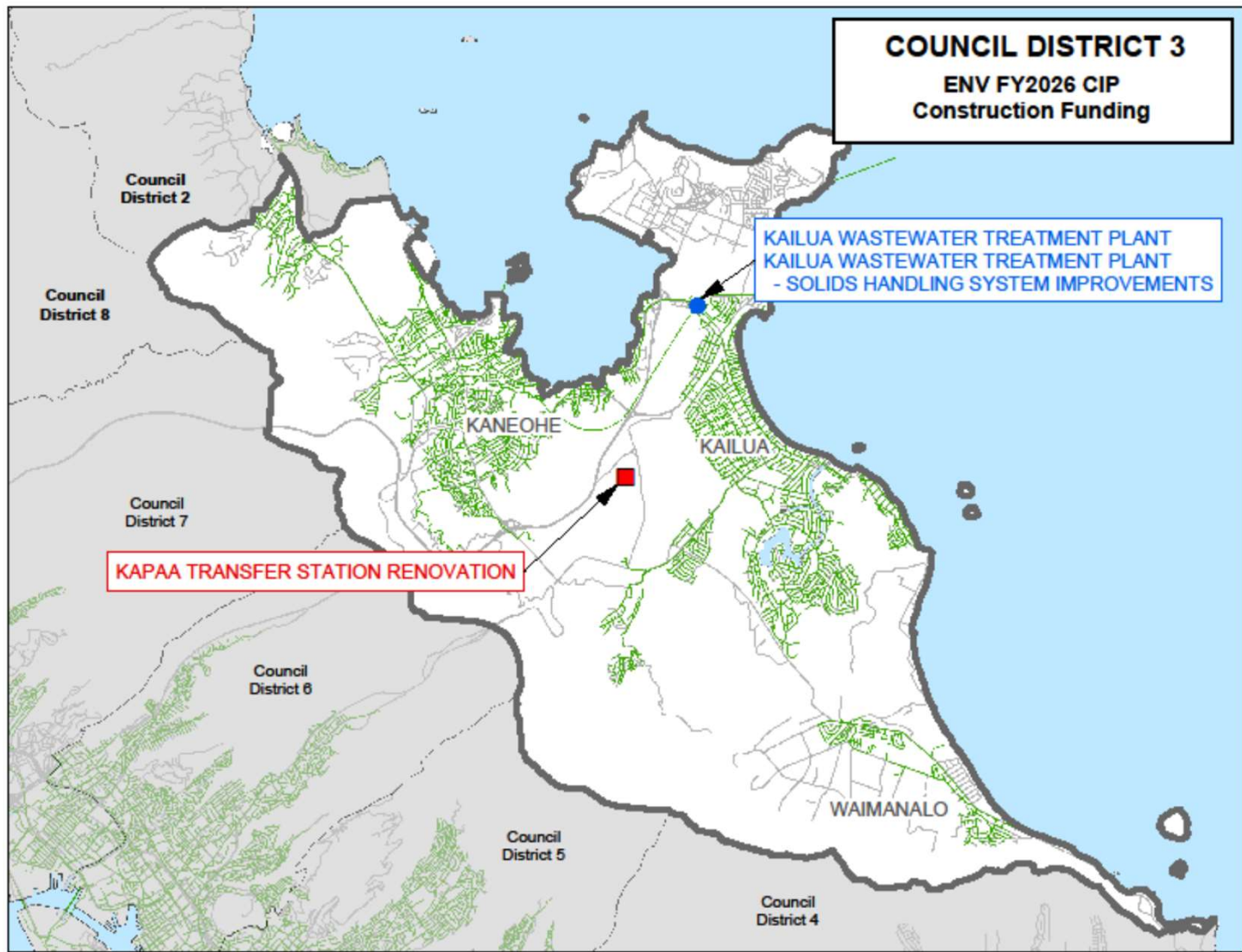
SEWAGE COLLECTION AND DISPOSAL	FY2026 TOTAL	PHASE
Wai'anae Wastewater Treatment Plant Improvements/Upgrade	\$1,900,000	P, D
Wai'anae WWTP Recycled Water and Improvements (New Project)	\$801,000	P, D
Waimalu Wastewater Pump Station Force Main System	\$1,902,000	D, C, I
Waipahu Wastewater Pump Station Force Main	\$902,000	L, P, D
Wastewater Equipment	\$13,666,400	E
Wastewater Facilities Replacement Reserve	\$5,000,000	X

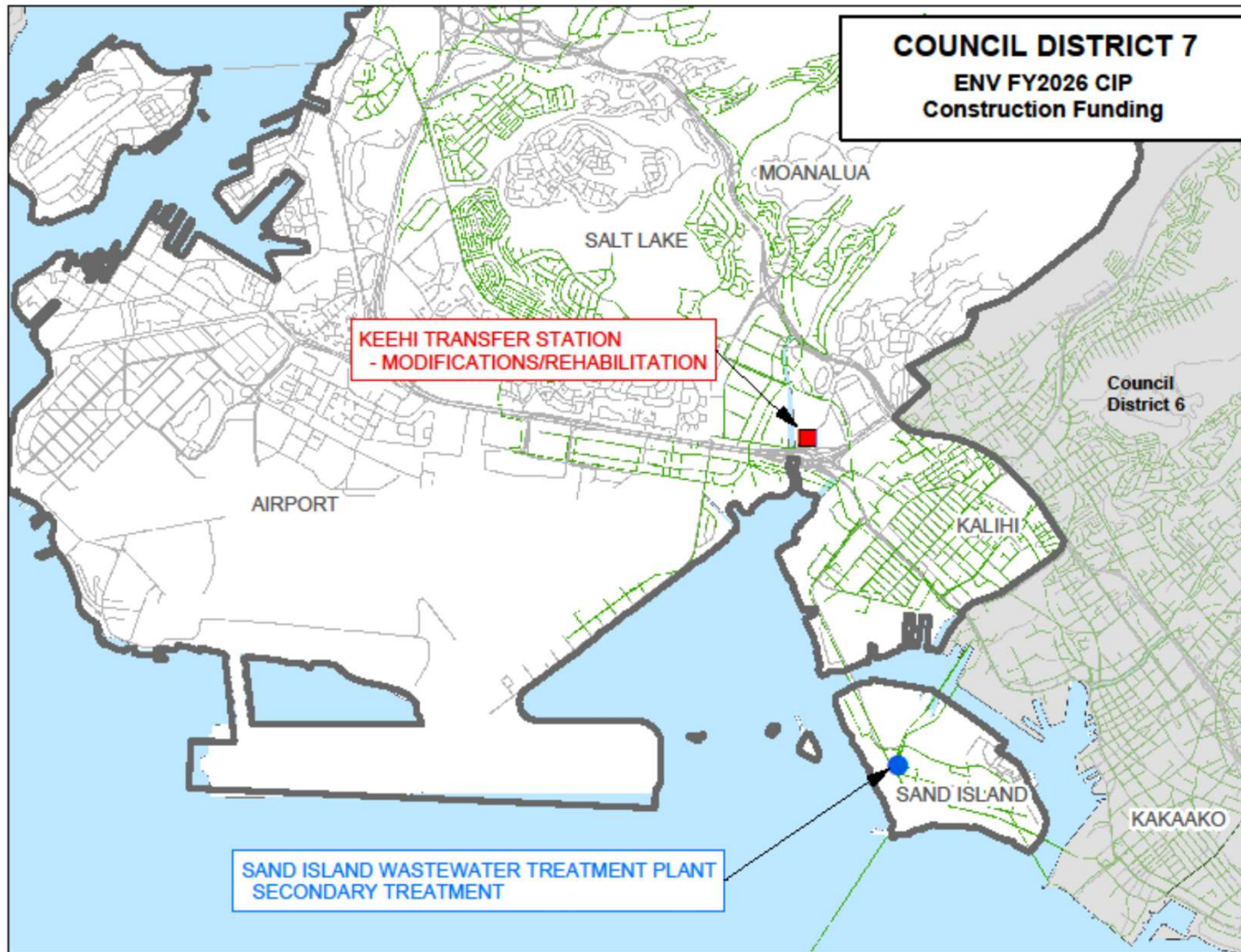


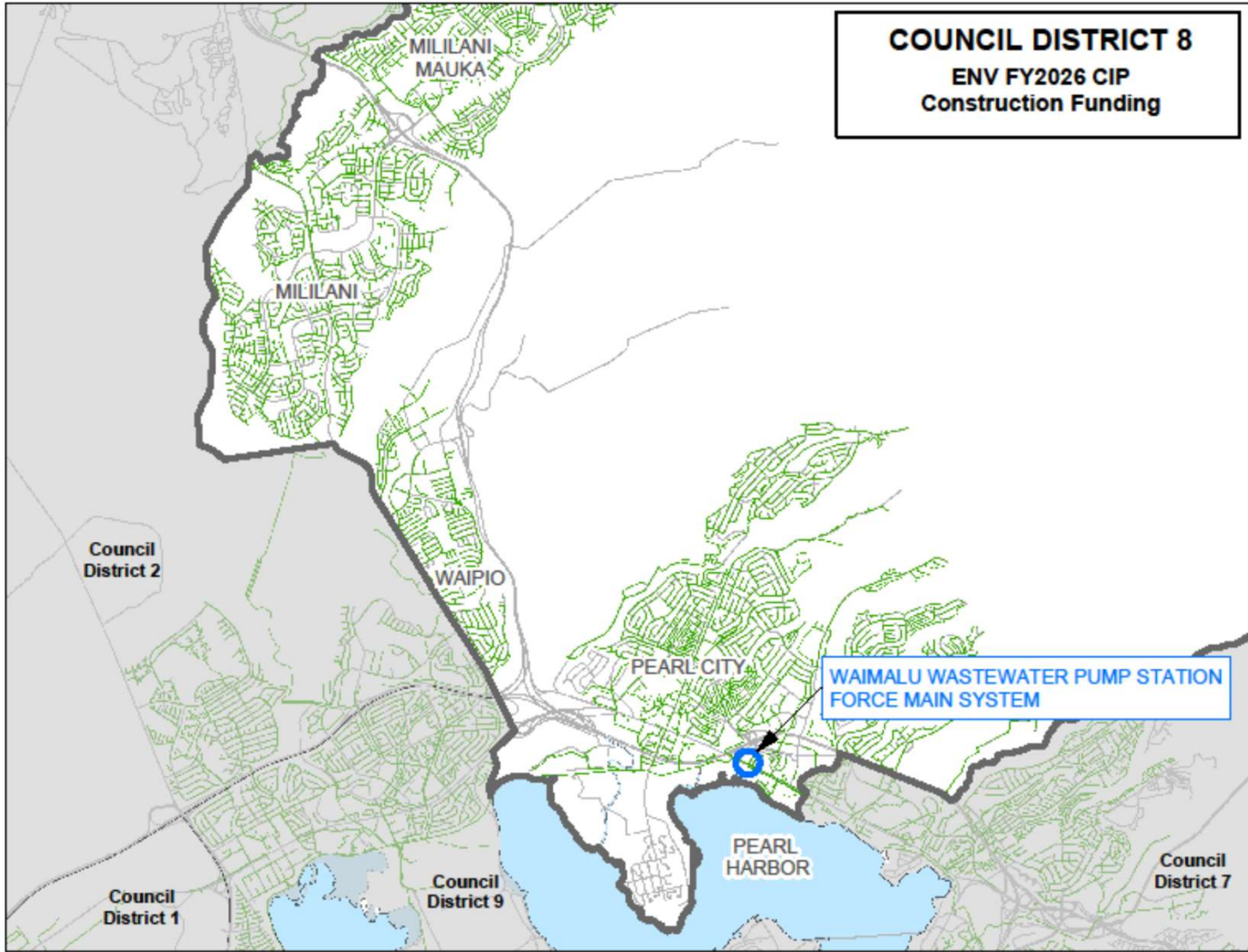
WASTEWATER FY2026 CIP

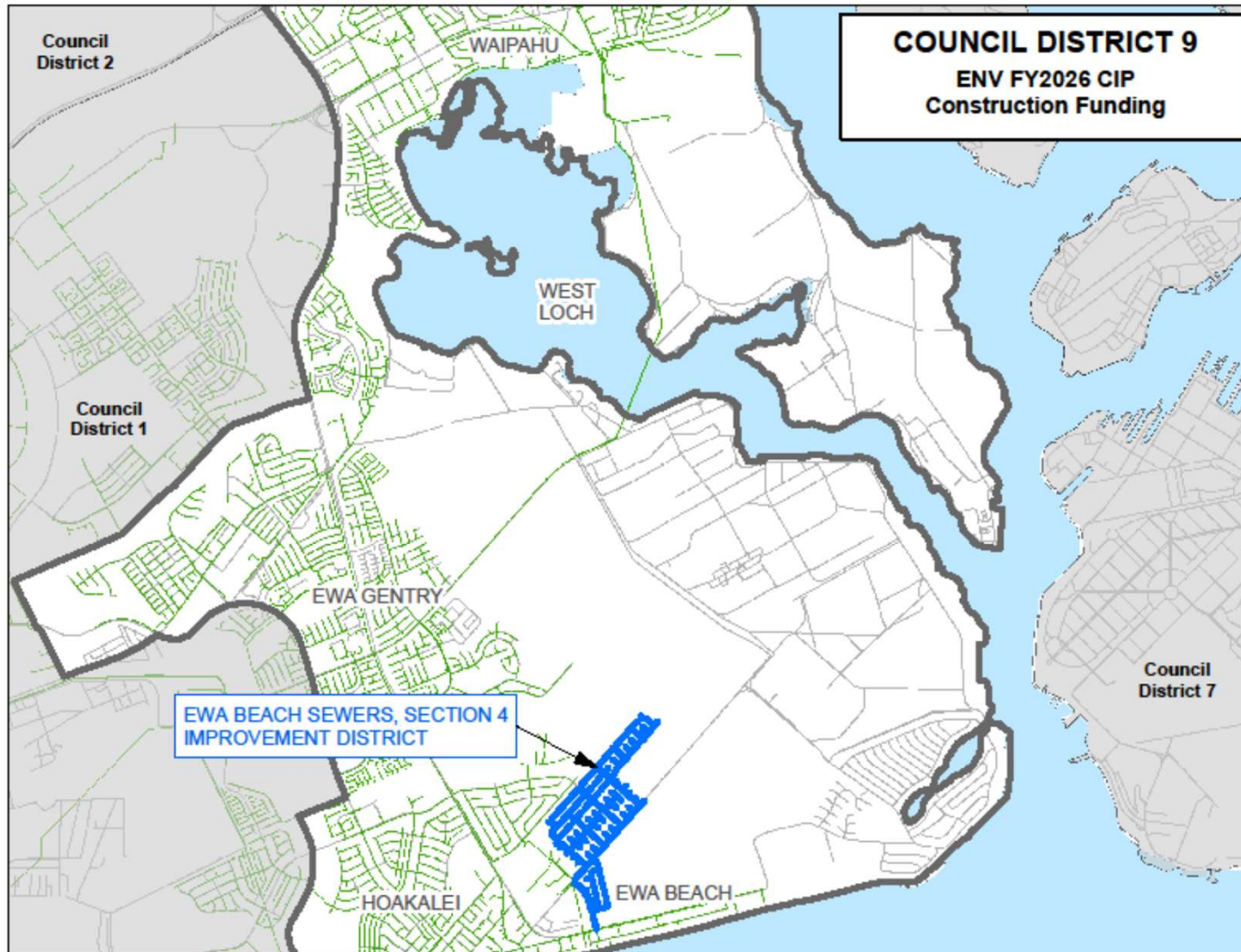
SEWAGE COLLECTION AND DISPOSAL	FY2026 TOTAL	PHASE
Wastewater Pump Stations – Electrical and SCADA Improvements	\$15,000,000	C, I
Wastewater Treatment Plant, Pump Station, and Force Main Projects	\$12,801,000	L, P, D, C, I, X
TOTAL SEWAGE COLLECTION AND DISPOSAL =	\$390,330,400	













Mahalo

Questions?