

Partners In Care – Oahu's Continuum of Care

Laura E. Thielen, Executive Director
laurat@partnersincareoahu.org



~~Homeless~~

PARTNERS IN CARE *Oahu's Continuum of Care*

Mission: To eliminate homelessness through open and inclusive participation and the coordination of integrated responses

MISC. COM. 57
HSH

Partners In Care – Oahu's Continuum of Care

- Continuum of Care (CoC): a regional or local planning body
- Mandated by the Federal Department of Housing and Urban Development (HUD).
- 400 Continuums Nationwide
- 2 in CoC's in Hawaii
 - Partners In Care
 - Bridging the Gap

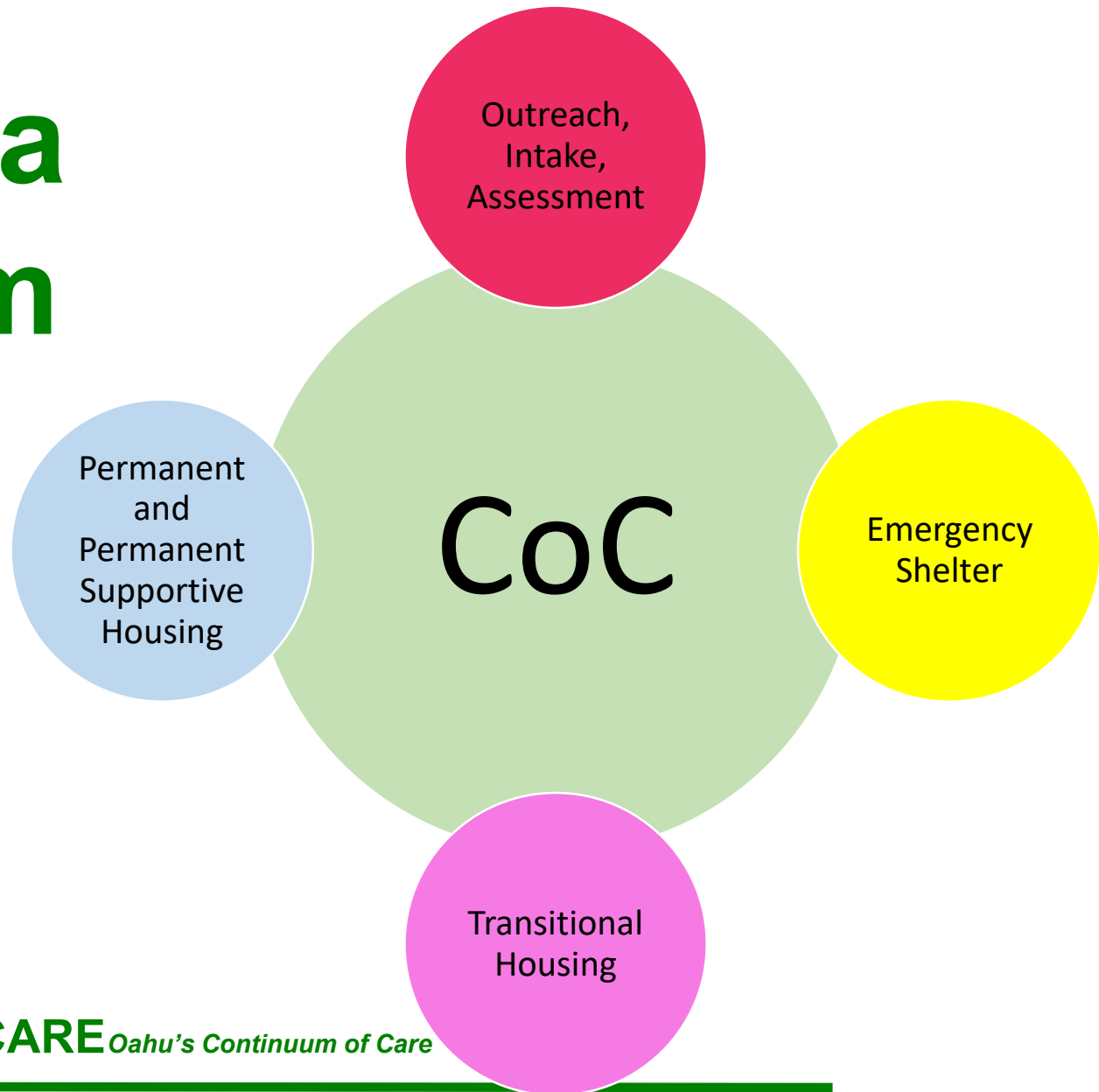


~~Homeless~~

PARTNERS IN CARE *Oahu's Continuum of Care*

Mission: To eliminate homelessness through open and inclusive participation and the coordination of integrated responses

4 Parts of a Continuum of Care



~~Homeless~~

PARTNERS IN CARE *Oahu's Continuum of Care*

Mission: To eliminate homelessness through open and inclusive participation and the coordination of integrated responses

About Partners In Care.....

Partners In Care's is a coalition made up of:

- Nonprofit homeless providers,
- Government stakeholders
- Private businesses,
- Community advocates,
- Persons with lived experience, and
- More



~~Homeless~~

PARTNERS IN CARE *Oahu's Continuum of Care*

Mission: To eliminate homelessness through open and inclusive participation and the coordination of integrated responses

Our Mission:

Partners In Care's mission is to eliminate homelessness through open and inclusive participation, and the coordination of integrated responses.



~~Homeless~~

PARTNERS IN CARE *Oahu's Continuum of Care*

Mission: To eliminate homelessness through open and inclusive participation and the coordination of integrated responses

Partners In Care

Responsibilities:

- ❖ Collaborative Applicant – Collects and applies for HUD Homeless Services and Housing funding for all of Oahu;
- ❖ Homeless Management Information System – Data Base;
- ❖ Coordinated Entry System – Coordination of Housing Resources;
- ❖ Planning – Assists in the Coordination of services throughout Oahu



Homeless

PARTNERS IN CARE *Oahu's Continuum of Care*

Mission: To eliminate homelessness through open and inclusive participation and the coordination of integrated responses

Point In Time Count

3,951

people experiencing homelessness
on O'ahu on the night of March 9, 2022



60%

Unsheltered

2,355 individuals were staying on the streets or other places not meant for human habitation



40%

Sheltered

1,596 individuals were staying in Emergency Shelters, Transitional Housing, or Safe Haven Programs

Change from 2020 - 2022

Total PIT Count

-11%

Unsheltered Count

+0.4%

Sheltered Count

-24%



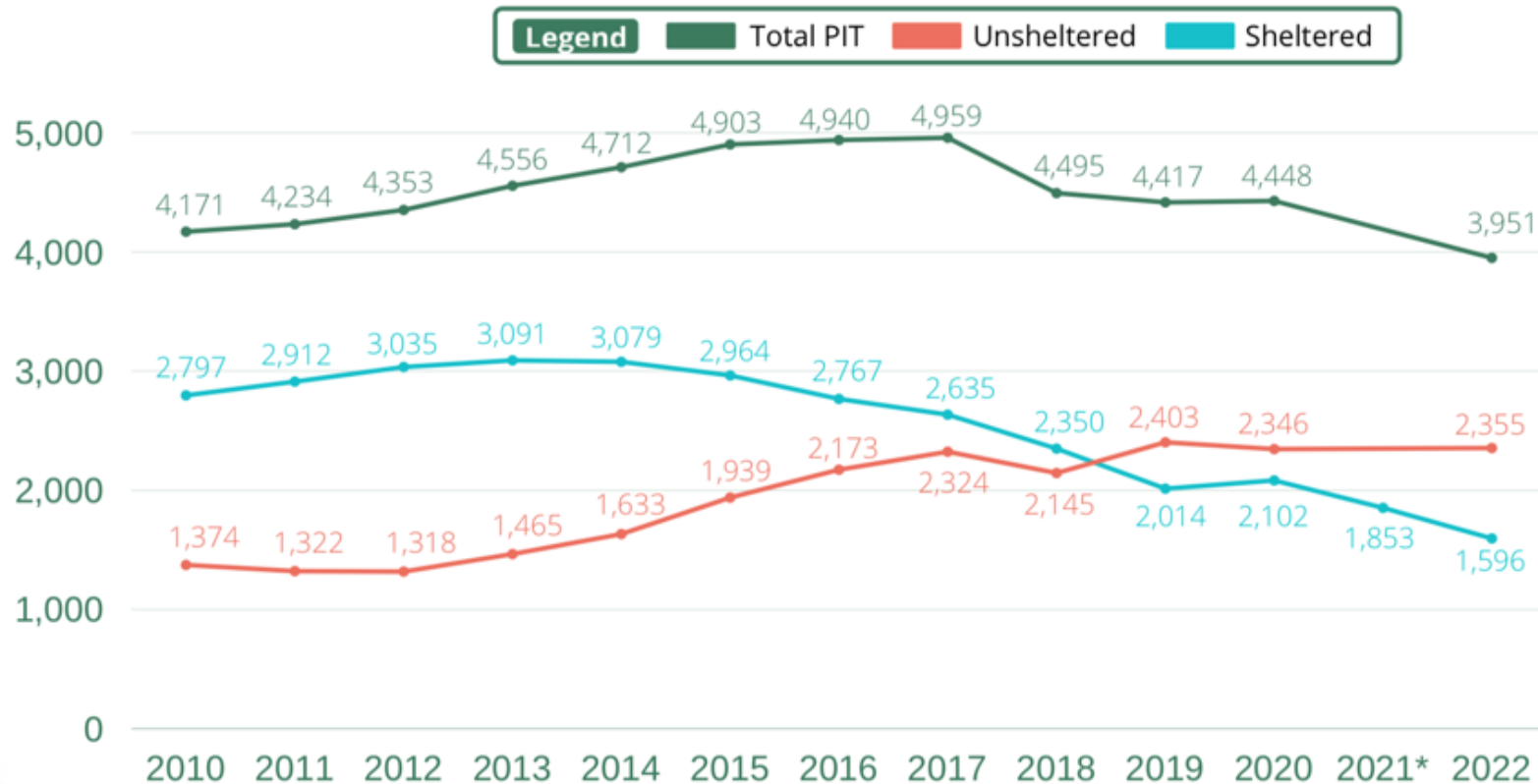
~~Homeless~~

PARTNERS IN CARE *Oahu's Continuum of Care*

Mission: To eliminate homelessness through open and inclusive participation and the coordination of integrated responses

Partners In Care

TOTAL PIT COUNT GROWTH RATE, 2010 - 2022



* The 2021 Unsheltered PIT Count was cancelled due to COVID-19. Only the Sheltered Count was conducted, as these numbers are pulled from the HMIS database and do not require in-person contact.



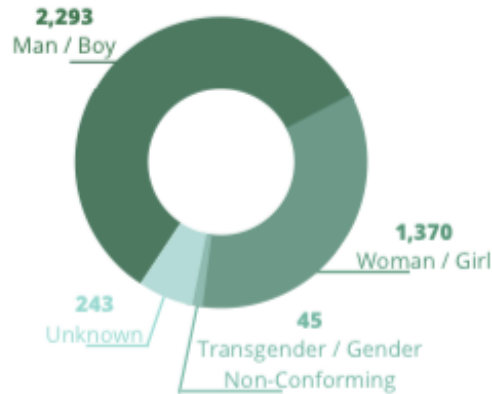
~~Homeless~~

PARTNERS IN CARE *Oahu's Continuum of Care*

Mission: To eliminate homelessness through open and inclusive participation and the coordination of integrated responses

Demographics

Gender



Demographics on all 3,951 individuals are reported here. All percentages are approximated. For exact numbers, please see the appendices.

- The majority of the PIT Count population identified as Men/Boys (58%).
- 35% identified as Women/Girls and 1% identified as Transgender or Gender Non-Conforming.
- 6% of the individuals counted were of unknown gender due to a high number of observations.

Age Groups



Adults: Persons 18 years and older.

Keiki: Persons under 18 years old.

Youth: Persons aged 18-24

Transgender: A general term used to describe people whose gender identity differs from the sex they were assigned at birth.

Gender Non-Conforming: Refers to people who do not adhere to traditional gender roles or stereotypes about how they should look or act based on the sex they were assigned at birth.



~~Homeless~~

PARTNERS IN CARE Oahu's Continuum of Care

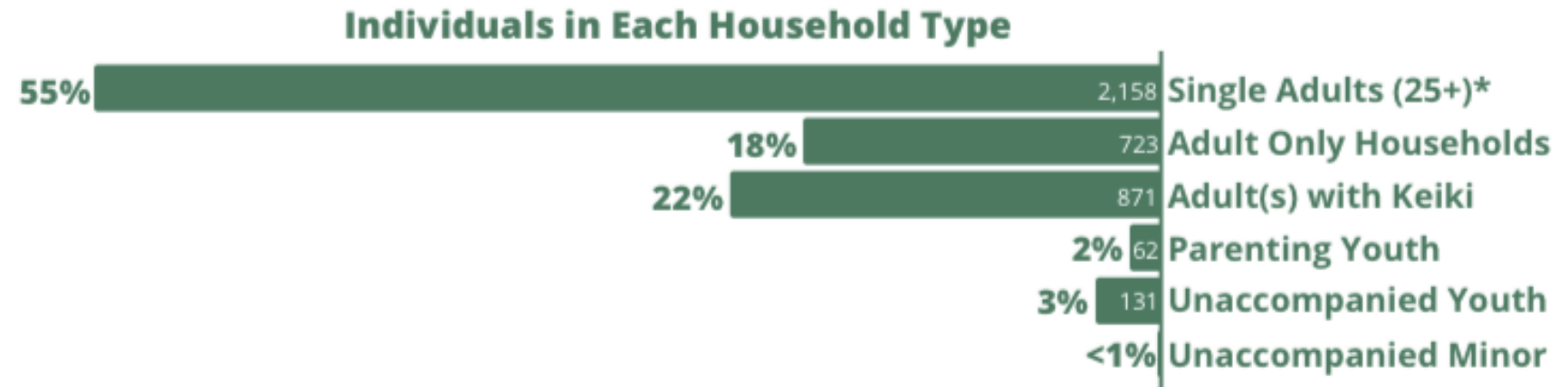
Mission: To eliminate homelessness through open and inclusive participation and the coordination of integrated responses

Demographics

545 keiki were counted in the PIT Count. The majority of these keiki were sheltered (86%).

The vast majority of individuals were adults (86% or 3,406) and Single Adults (25 years and older) account for 55% of the population.

Adult(s) with minor keiki and Adult Only Households account for 22% and 18% of the population, respectively.



* For the purposes of this graph, we separated Adults ages 25 years and older from Unaccompanied Youth. For the remainder of the report any reference to Adult will be any persons 18 years old or older



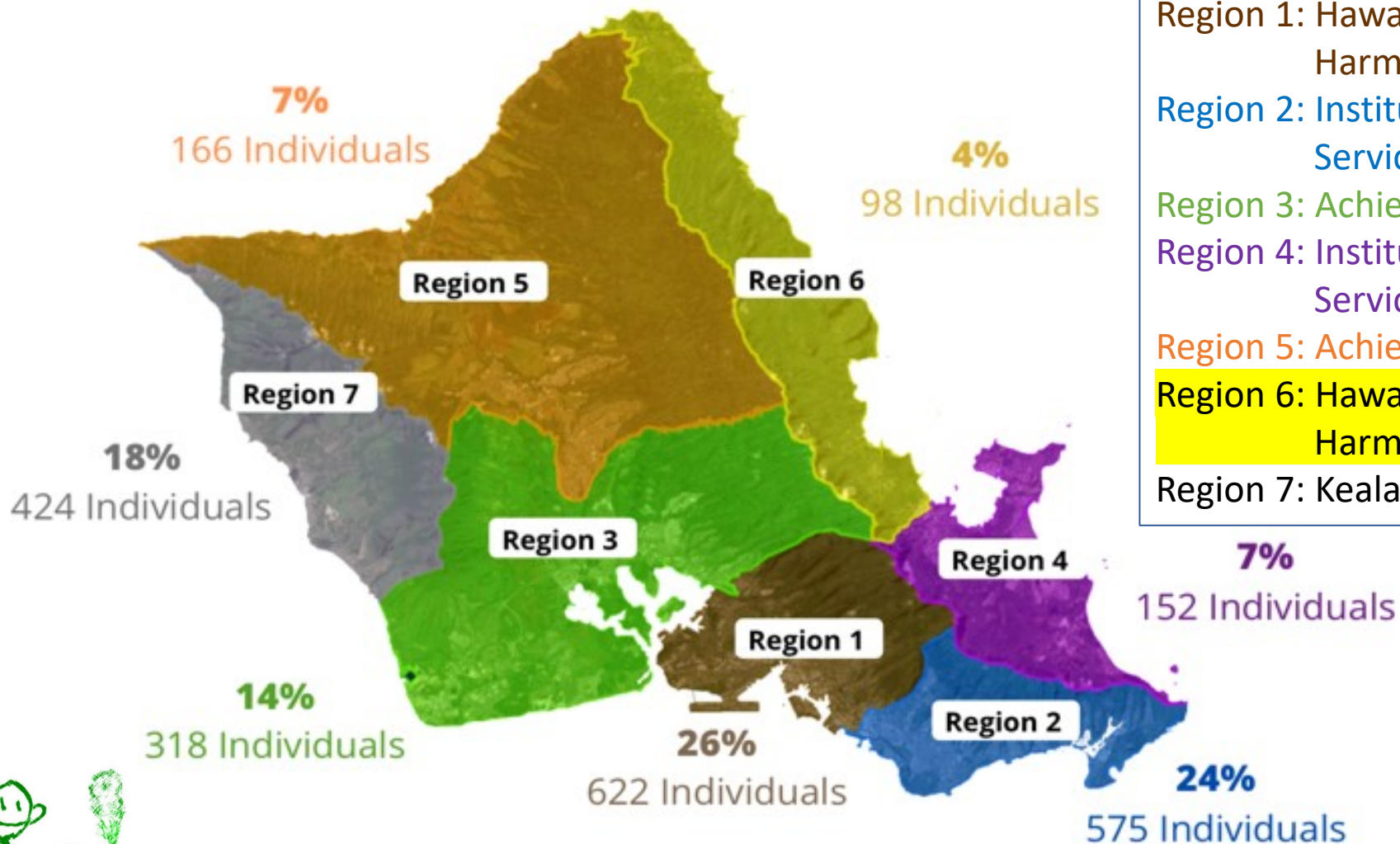
~~Homeless~~

PARTNERS IN CARE Oahu's Continuum of Care

Mission: To eliminate homelessness through open and inclusive participation and the coordination of integrated responses



~~Homeless~~



- Region 1: Hawaii Health and Harm Reduction Center
- Region 2: Institute for Human Services
- Region 3: Achieve Zero
- Region 4: Institute for Human Services
- Region 5: Achieve Zero
- Region 6: Hawaii Health and Harm Reduction Center
- Region 7: Kealahou West Oahu

PARTNERS IN CARE Oahu's Continuum of Care

Mission: To eliminate homelessness through open and inclusive participation and the coordination of integrated responses

Vacancy Grid

Partners In Care provides a Vacancy Grid that gives an estimate of how many spaces are currently available in the system.

- Catholic Charities – Family Assessment Center HONU
- CARE Hawaii – LCRS beds Residential Youth Services & Empowerment (RYSE)
- Family Promise – Honolulu Site Minor Shelter
- Dynamic Healing Center – Kulaokahua Haleiwa Site
- Gregory House – Community Residential Program Shelter of Wisdom
- I.H.S. The Shelter
- Hale Mauiola (HMO) Wai'anāe Civic Center
- Ka'aahi Women's Shelter Waikiki Health Center – Keauhou Shelter
- Sumner Shelter Alternative Structures International (ASI)-
- Waimanalo Vet House Waimanalo Emergency Shelter



Homeless

PARTNERS IN CARE Oahu's Continuum of Care

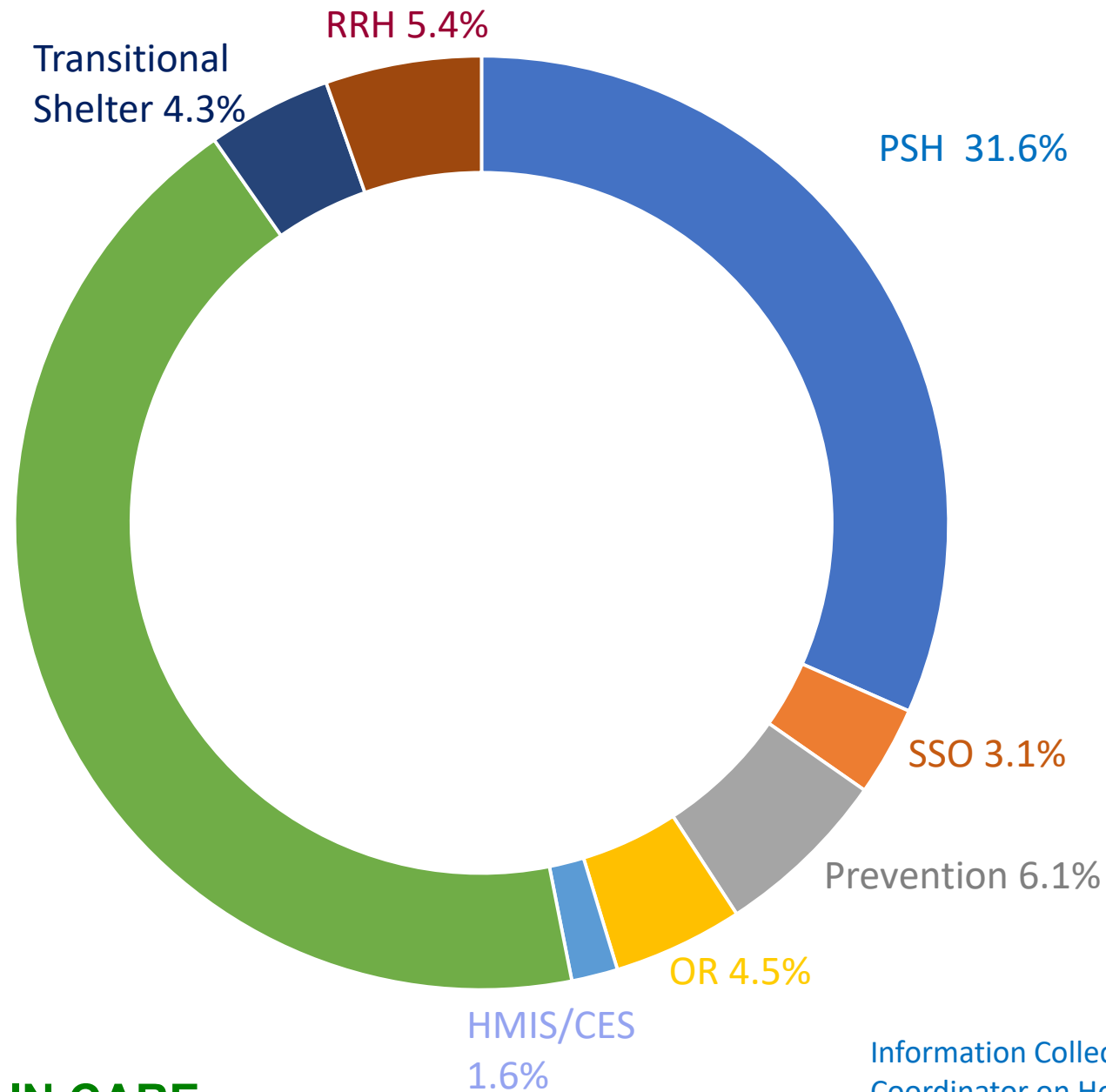
Mission: To eliminate homelessness through open and inclusive participation and the coordination of integrated responses



Homeless

PARTNERS IN CARE Oahu's Continuum of Care

Mission: To eliminate homelessness through open and inclusive participation and the coordination of integrated responses



Information Collected by the Governor's
Coordinator on Homelessness Office 2022



This is why we
do it!!

PARTNERS IN CARE *Oahu's Continuum of Care*

Mission: To eliminate homelessness through open and inclusive participation and the coordination of integrated responses



~~Homeless~~

**Thank You
For More Information
Please Go To:**

www.partnersincareoahu.org



Homeless

PARTNERS IN CARE *Oahu's Continuum of Care*

Mission: To eliminate homelessness through open and inclusive participation and the coordination of integrated responses